

## Nivel FluCov: Influenza-COVID-19 Activity Report #5

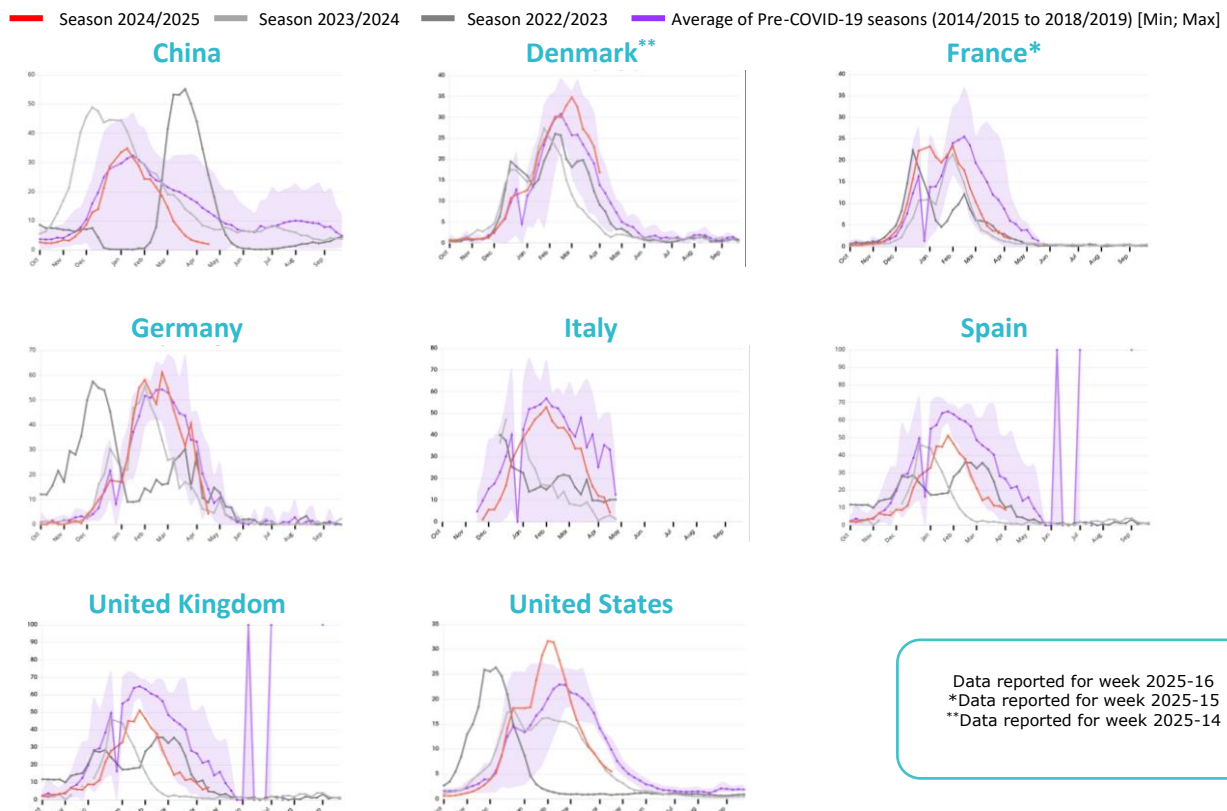
29 April 2025

### Seasonal Influenza

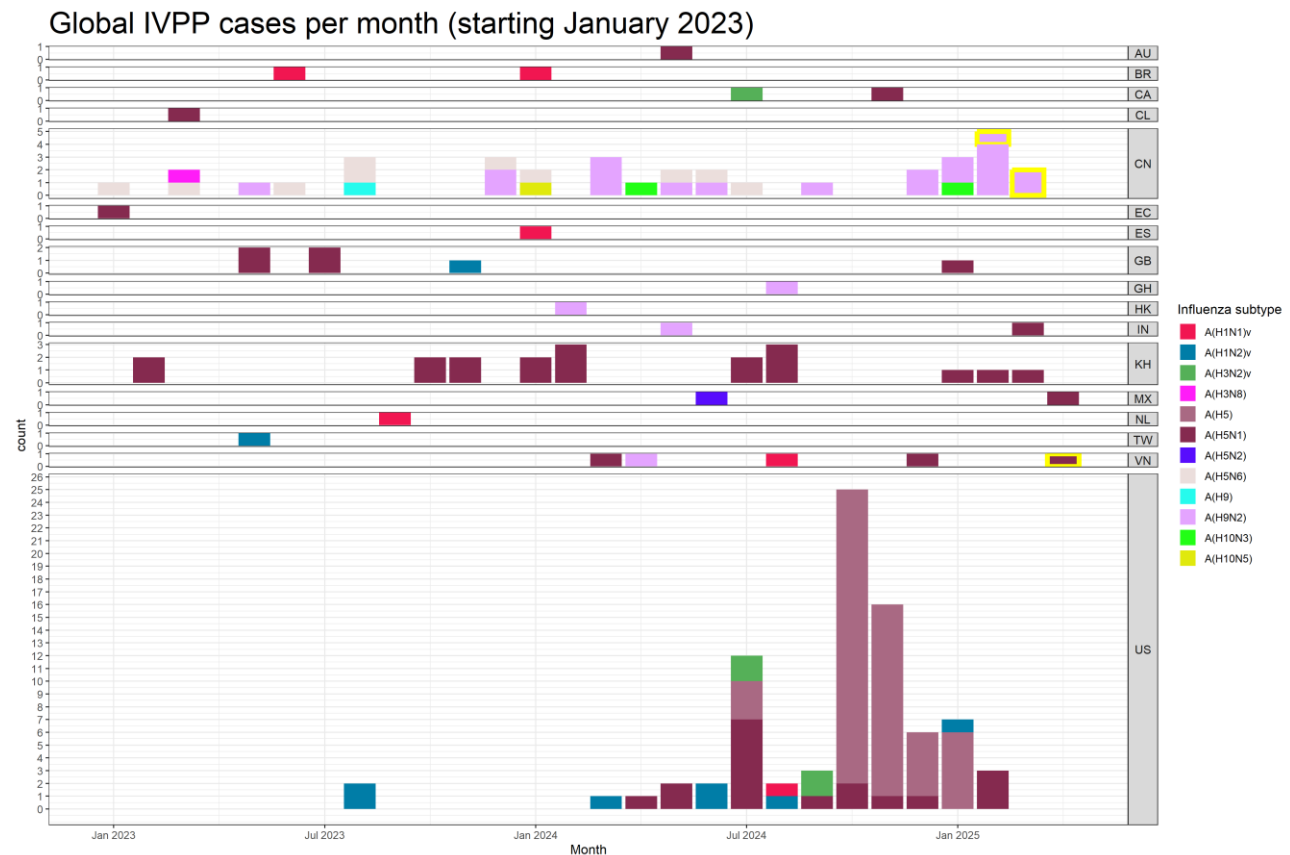
#### Influenza activity peaked in the Northern Hemisphere, most countries below baseline level

- **North America and Europe:** In Denmark, influenza activity decreased to 9% positivity in week 16, according to the local surveillance system. Influenza activity remained very low (<10% positivity) in the US, Spain, UK, Italy and France. In Germany, influenza activity decreased further to very low with 4.4% positivity in week 16.
- **Asia:** Influenza activity in China remained at very low levels (<10% positivity) in Northern and Southern China.
- **Southern Hemisphere:** Activity was low or decreased in all countries except for a small increase in a few countries in Temperate South America.
- **Severity:** The 2024/25 influenza season is considered intense in both the US and EU, decreasing trends in activity are now being observed. EuroMOMO estimates of all-cause mortality have returned to expected levels, after presenting increased levels of mortality from week 51, 2024 to week 9, 2025.
- **Circulating virus:** Globally, of sequenced samples, influenza A(H1N1)pdm09 was the predominant virus type, followed by A(H3N2) and B/Victoria. This season up to week 16, influenza A(H1N1)pdm09 dominated circulation in China. In the US, circulation of influenza A and B was 2:1 in week 16.
- **Vaccine match:** Based upon antigenic characterization (wk16), [China](#), the [US](#) and [UK](#) report a good match (96-100% 'well recognised'/'similar') for influenza A(H1N1)pdm09 and B/Victoria and a partial match (59-81% 'well-recognised'/'similar') for influenza A(H3N2).
- **Influenza Viruses of Pandemic Potential:** 8-year-old girl with H5N1 encephalitis reported in Vietnam after exposure to poultry, clade currently unknown.
- **SARS-CoV-2 activity:** Global activity remained low (<10%) in week 15, except for a few countries in Central America and the Caribbean, Southwest Europe and Western Asia.

### Positive Influenza tests (%)



## Influenza viruses with pandemic potential



AU = Australia, BR = Brazil, CA = Canada, CL = Colombia, CN = China, EC = Ecuador, ES = Spain, GB = United Kingdom, GH = Ghana, HK = Hong Kong, IN = India, KH = Cambodia, MX = Mexico, NL = Netherlands, TW = Taiwan, US = United States, VN = Vietnam

New cases are outlined in yellow

### New since 3 April

**Influenza A(H5N1):** On 18 April 2025, a severe H5N1 case was reported in **Vietnam** (VN). The case involved an 8-year-old girl from the Tay Ninh province who was hospitalized with fever, headache and gastrointestinal symptoms on 11 April. She was diagnosed with encephalitis two days later, after her clinical status deteriorated. Respiratory samples taken were negative for influenza, but the cerebrospinal fluid tested positive for influenza A(H5N1). The clade is currently unknown. The case had contact with a poultry flock which experienced mass deaths two weeks earlier.

Globally, from 2003 through 18 April 2025, there have been 973 human cases of A(H5N1), including 470 deaths. To date, no sustained human-to-human transmission has been detected.

For avian influenza virus infections in animals, please see: [Global AIV with Zoonotic Potential \(fao.org\)](https://www.fao.org/global-aiiv-with-zoonotic-potential/) [last updated 27 March 2025].

## Seasonal influenza global overview: 29 April 2025

**Global circulation:** In the **Northern hemisphere**, influenza activity decreased or remained stable in most countries. Increased activity was reported in a few countries in Tropical South America, Western Africa, Eastern Europe and Eastern Asia. Activity remained elevated in the Americas, Western Africa, Northern Africa, Eastern Africa, Europe, and Western, Southern, Southeast and Eastern Asia. In the **Southern hemisphere**, activity remained at low level or decreased in most countries. Influenza activity remained elevated in a few countries in Tropical South America.

Northern Hemisphere				
Country/ region	Week	Indicator	Info	Trend
EU	16	Predominant virus lineage	Mostly A(H3N2) and B	<10%
		Influenza activity	Baseline activity in most countries	
		% positive tests	Pooled: 7.7%, median: 6.8%	
		SARI influenza positive	Pooled: 6%, median: 5.8%	
		Mortality (EuroMOMO)	Excess mortality returned to expected levels	
England	16	Predominant virus lineage	Co-circulation of A(H1N1)pdm09, A(H3N2) and B viruses	<10%
		Influenza activity	Baseline activity levels	
		% positive tests	4.2%	
		Hospitalization rate (weekly)	1.29 per 100,000	
USA	16	Predominant virus lineage	Co-circulation of A(H1N1)pdm09, A(H3N2) and B viruses	<10%
		Influenza activity	Continues to decline, several more weeks of activity expected	
		% positive tests	5.6%	
		Hospitalization rate (weekly)	0.6 per 100,000	
		Mortality	0.3% of deaths attributed to influenza	
Canada	16	Predominant virus lineage	Influenza A(H1N1)pdm09	<10%
		Influenza activity	Decreasing trend	
		% positive tests	9.6%	
		Hospitalization rate (weekly)	1.6 per 100,000	
		Mortality	376 deaths since 25 August 2024	
China	16	Predominant virus lineage	A(H1N1)pdm09	<10%
		Influenza activity	Low activity in Southern and Northern provinces	
Southern Hemisphere				
Brazil	15	Predominant virus lineage	A(H1N1)pdm09	<10%
		Influenza activity	Below epidemic threshold	
		% positive tests	3.8%	
Australia	15-16	Predominant virus lineage	Influenza A(H1N1)pdm09	<10%
		Influenza activity	Low at interseasonal levels	
		% positive tests	5.3%	
		Hospitalizations	342 adults admitted to sentinel hospitals in 2025 (1 January – 6 April)	
		Mortality rate	26 deaths in January 2025	
South Africa	16	Predominant virus lineage	Influenza A	↑
		Influenza activity	Influenza season started in week 13	
		% positive tests	14.3% (15/105 detections)	
		Hospitalizations	39 (30 Dec 2024 – 20 April 2025)	

↑ increase; → stable; ↓ decrease

## SARS-CoV-2 global overview: 29 April 2025

**Global circulation:** Globally, SARS-CoV-2 activity remained low across reporting countries except for a few countries in Central America and the Caribbean, Southwest Europe and Western Asia where positivity remained elevated.

Northern Hemisphere				
Country/region	Week	Indicator	Info	Trend
EU	16	Detections	At very low level	→
		% positive tests	Pooled: 2.3%, median: 1.6%	
		SARI SARS-CoV-2 positive	Pooled: 1.4%, median: 0.8%	
		Mortality (EuroMOMO)	Excess mortality returned to expected levels	
England	16	Detections	Stable at baseline level	→
		% positive tests	5.2%	
		Hospitalizations	1.48 per 100,000	
		Mortality	79 (7 days up to 4 April 2025)	
USA	16	% positive tests	3.4%	→
		Hospitalizations	1.6 per 100,000	
		Mortality	0.7% of all deaths	
Canada	16	Detections/activity	Stable at low levels	→
		% positive tests	2.2%	
		Hospitalizations	0.6 per 100,000	
		Mortality	1886 deaths since 25 August 2024	
China	16	Detections	0 cases reported (28 days up to 6 April)	
		% positive tests	-	
Southern Hemisphere				
Brazil	15	Detections	Circulation decreasing	↓
		% positive tests	2.75%	
Australia	15-16	Detections	Remain low	→
		% positive tests	2.6%	
		Hospitalizations	502 adults admitted to sentinel hospitals in 2025 (1 January – 6 April)	
		Mortality	228 deaths in January 2025	
South Africa	16	Detections	No detections in week 16	→
		% positive tests	0% (0/105 detections)	
		Hospitalizations	39 (30 Dec 2024 – 20 April 2025)	

↑ increase; → stable; ↓ decrease; → stable at base level

---

## Data sources & details FluCov influenza and COVID-19 activity report

### Percentage positive graphs (via CERP - [CERP - EPI Live! Flu](#))

China:	China CDC	Germany & Italy:	WHO FluNET (sentinel)
US:	FluView (Clinical Laboratories)	All others:	WHO FluNet (non-sentinel)
Spain:	ERVISS (sentinel)	Vaccine match:	US (CDC), EU (ERVISS)

### Influenza Viruses with Pandemic Potential

- [ProMED](#)
- [Disease Outbreak News | WHO](#)
- <http://outbreaknewstoday.com/>
- [Homepage | CIDRAP](#)
- [ECDC Weekly threats reports \(CDTR\) \(europa.eu\)](#)

### Seasonal influenza and SARS-CoV-2

#### Global

- [Global Influenza Programma - Influenza update | WHO](#) (#523, 23 April 2025)
- [FluCov Dashboard | Nivel](#)

#### Europe

- [ERVISS | ECDC](#) (W16)
- [EuroMOMO](#) (W16)
- [National flu and COVID-19 surveillance reports: 2024 to 2025 season | UKHSA](#) (W17)
- [COVID-19 | UKHSA data dashboard](#) (10 April 2025)

#### Americas

- [FluView | FluView | CDC](#) (EW16)
- [COVID Data Tracker | CDC](#) (25 April 2025)
- [Overview: Canadian respiratory virus surveillance report \(FluWatch+\) — Canada.ca](#) (EW16)
- [Respiratory Viruses weekly report | PAHO - WHO](#) (EW15)

#### Western Pacific

- [Weekly Report | Chinese National Influenza Center](#) (W16)
- [Seasonal influenza \(who.int\)](#) (23 April 2025)
- [COVID-19 situation reports | WHO Western Pacific](#) (25 April 2025)
- [Australian Respiratory Surveillance Reports – 2024 | Australian Government Department of Health and Aged Care](#) (W15-16)

#### Africa

- [Weekly respiratory pathogens surveillance report week | NICD](#) (W16)

### A Nivel publication

Laarman, C., Heemskerk, S., Boudewijns, B., Del Riccio, M., Caini, S., Stelma, F. [Nivel FluCov: Influenza-COVID-19 Activity Report #5: 29 April 2025](#). Netherlands, Utrecht: Nivel, 2025

### Websites for more information

Project Website: <https://www.nivel.nl/en/flu cov>

FluCov Dashboard: <https://www.nivel.nl/en/flu cov-dashboard>

### Funding

The Nivel FluCov project is funded by Sanofi.