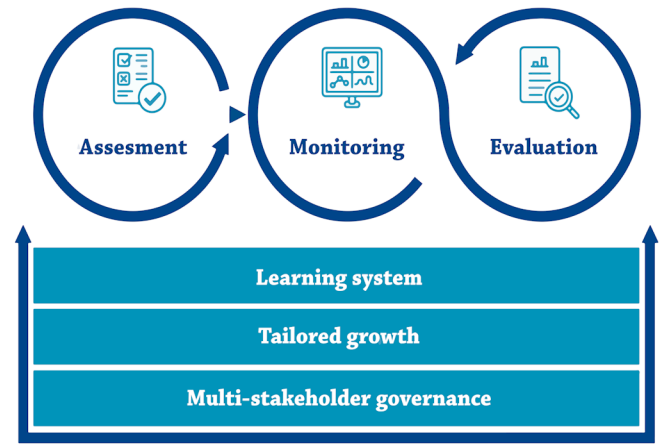


AMEQUIS

The integrated Assessment,
Monitoring, Evaluation and
Quality Improvement System

for the
European Reference Networks



The highly specialised healthcare providers connected to the European Reference Networks (ERNs) all pursue one common goal; to deliver the best quality of healthcare to patients with rare or complex diseases or conditions.



To fully support these healthcare providers and networks, a quality improvement system has been designed: AMEQUIS!



Strengthens the ambitions and structures that are already in place.
Acknowledges the uniqueness of each healthcare provider and network.
Supports improvement of activities the networks are already good at.

Processes

Assessment

The assessment process has been updated to assure better alignment of new members and ERNs, with the goals of the system.

Monitoring

The monitoring process supports quality improvement through transparency, reflection and benchmarking by measurement of relevant indicators. With emphasis on impact and areas that matter for patients.

Evaluation

Networks and members are evaluated and supported to reflect on past activities, celebrate successes and set goals for the future through a strategic quality process.

Structures

Learning System

Supports and maintains various types of learning processes at the individual HCP, the individual ERN, and the ERN system level.

Tailored Growth

Data from the monitoring and evaluation process foster evolvement of indicators and standards, creating dynamic processes tailored to the needs of the different ERNs. While taking into account the balanced burden on data management.

Multi-stakeholder Governance

The AMEQUIS Working Group coordinates and aligns quality improvement initiatives across ERNs.